

CLUMBER SPANIEL

Clumber Spaniel Rescue and Placement

Sue Carr, Chairperson

Basking Ridge, NJ

Scarr41@optonline.net

Local contact: _____

Phone: _____

City: _____ State: _____



Adult Females



Adult Males



HAVE YOU SEEN A DOG THAT LOOKS LIKE THIS IN YOUR LOCAL SHELTER?

WEIGHT: 55 to 80 pounds. The Clumber spaniel is the heaviest of all the Spaniel breeds.

HEIGHT: From 17 to 20 inches.

COLOR: Always white in color, but can have markings on the face and ears in orange (like a Brittany Spaniel) or lemon (similar to a blonde Cocker Spaniel). **The nose is shades of brown, never black!** Freckling on the legs and/or face is very common. Other markings may include a patch of color on the body or just above the tail.

COAT: Feathering is very similar to a Spring Spaniel.

TAIL: In the majority of cases has been docked, however some carry a full tail similar in feathering to a Golden Retriever. When docked, the tail is very thick, and longer than a Cocker Spaniel's.

TEMPERMENT: Clumbers are usually sweet and mellow in temperament.

Clumbers are often mistaken for a mixed breed because they have a long body like a Basset Hound, a large head with droopy eyes like a Saint Bernard, and a soft facial expression similar to other Spaniels.

If you or anyone in your organization comes across a Clumber in your local shelter, or should you have questions about a dog that may resemble a Clumber, please email Sue Carr – scarr41@optonline.net. We will respond quickly and will be available to offer any assistance you may require.

All of the CSCA's Rescue & Placement's activities and expenses are solely funded by the Clumber Spaniel Rescue Charitable Trust, a 501(c) 3 charitable organization. All donations are fully tax-deductible

CLUMBER SPANIEL



Two females, a male and a puppy bringing up the rear



Male Clumber with a Corgi



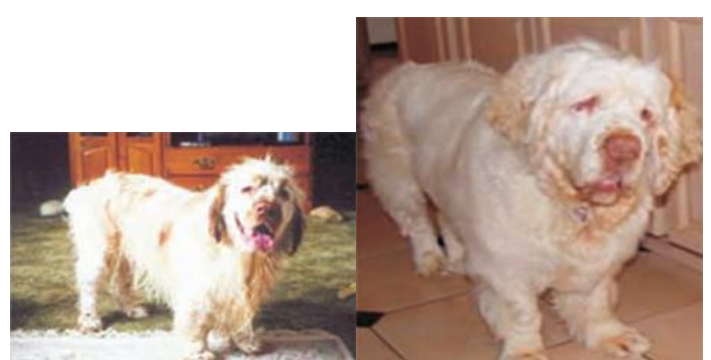
Yes they can get dirty



Male Clumber with undocked tail



Clumbers pretending to be watchdogs



Happy Clumbers



Favorite Clumber pose



Springer Spaniels and a Clumber (in white)

For further information or assistance, please contact the regional Co-Chair in your area

West Co-Chair

Sherry Boggs (CA)

(805)901-6279

msadoptee@hotmail.com

Central Co-Chair

Nancy Merk (OH)

(419) 684-7270

bassetwoofr@yahoo.com

East Co-Chair

Denise Shelar (CT)

(203) 888-5325

w00dclmbe@aol.com