

All Breeds (AKC only)		2020 Mid-Year (through July 2020)													
Metric	2008	2009	2010	2011	2012	2013	2014	2015	2016	2017	2018	2019	2020	Notes	
	Registered Litters	353,205	310,515	274,258	245,174	227,791	215,684	210,821	211,701	224,577	240,073	250,925	258,447	173,534	# AKC litters registered each year
Litter Complement	1,694,305	1,498,294	1,337,518	1,211,274	1,142,013	1,095,496	1,083,185	1,102,566	1,197,335	1,300,326	1,357,229	1,410,526	951,638	# Pups in each year's litters (known as the "Complement")	
Average Complement	4.80	4.83	4.88	4.94	5.01	5.08	5.14	5.21	5.33	5.42	5.41	5.46	5.48	Average # of pups per litter	
Individually Registered Pups (to date)	654,981	566,826	508,184	483,807	455,819	451,864	457,584	470,964	516,104	546,617	546,479	511,074	231,560	# Pups from each year's litters individually registered (to date)	
Actual Return Rate (to date)	38.7%	37.8%	38.0%	39.9%	39.9%	41.2%	42.2%	42.7%	43.1%	42.0%	40.3%	36.2%	24.3%	% Pups from each year's litters individually registered (to date)	
Limited Registrations (to date)	76,700	73,727	69,880	73,285	75,310	79,016	84,842	95,451	110,734	123,344	130,145	137,763	77,544	# Limited Registrations from each year's litters (to date)	
% Complement Registered Limited (to date)	4.5%	4.9%	5.2%	6.1%	6.6%	7.2%	7.8%	8.7%	9.2%	9.5%	9.6%	9.8%	8.1%	% Pups from each year's litters Registered as Limited (to date)	
Revoked Limited (to date)	1,499	1,562	1,320	1,461	1,479	1,642	1,793	2,139	2,176	2,034	1,639	880	141	# Revoked Limited Dogs from each year's litters (to date)	
Litters from Revoked Limited (to date)	1,403	1,423	1,228	1,325	1,368	1,535	1,672	1,974	2,037	1,924	1,577	843	138	Litters involving each year's Revoked Limited (to date)	
Complement Bitches Bred	99,642	89,826	81,778	77,617	78,115	77,756	79,538	81,659	85,671	79,254	55,222	17,327	1,806	Bitches from each year's litters that have been bred (to date)	
Complement Dogs Bred	58,707	51,538	46,450	43,146	41,856	40,546	40,449	40,483	42,380	39,973	31,833	13,081	1,088	Males from each year's litters that have been bred (to date)	
Total Complement Bred (to date)	158,349	141,364	128,228	120,763	119,971	118,302	119,987	122,142	128,051	119,227	87,055	30,408	2,894	Total from each year's litters that have been bred (to date)	
% Complement Bred (to date)	9.3%	9.4%	9.6%	10.0%	10.5%	10.8%	11.1%	11.1%	10.7%	9.2%	6.4%	2.2%	0.3%	% of each year's litters that have been bred (to date)	
Complement Bitches in Conformation	26,496	24,819	23,940	23,129	22,447	21,582	21,025	20,423	20,220	20,112	19,089	13,043	677	# Bitches from each year's litters in Conformation (to date)	
Complement Dogs in Conformation	21,128	19,520	19,015	18,377	17,847	16,578	16,164	15,331	15,421	14,869	14,100	9,877	555	# Males from each year's litters in Conformation (to date)	
Total Complement in Conformation (to date)	47,624	44,339	42,955	41,506	40,294	38,160	37,189	35,754	35,641	34,981	33,189	22,920	1,232	Total from each year's litters in Conformation (to date)	
% Complement in Conformation (to date)	2.8%	3.0%	3.2%	3.4%	3.5%	3.5%	3.4%	3.2%	3.0%	2.7%	2.4%	1.6%	0.1%	% of each year's litters in Conformation (to date)	
Total Complement in Companion (to date)	9,629	9,007	8,988	8,845	8,362	8,106	8,019	7,451	7,032	6,028	3,939	1,233	46	Total from each year's litters in Companion (to date)	
% Complement in Companion (to date)	0.57%	0.60%	0.67%	0.73%	0.73%	0.74%	0.74%	0.68%	0.59%	0.46%	0.29%	0.09%	0.00%	% of each year's litters in Companion (to date)	
Total Complement Placing in Performance (to date)	11,236	10,909	10,945	11,373	11,384	11,263	11,774	11,641	12,009	11,239	8,252	2,542	73	Total from each year's litters placing in Performance (to date)	
% Complement Placing in Performance (to date)	0.7%	0.7%	0.8%	0.9%	1.0%	1.0%	1.1%	1.1%	1.0%	0.9%	0.6%	0.2%	0.0%	% of each year's litters placing in Performance (to date)	

AKC Dog Registrations	699,430	632,390	546,351	517,371	480,603	465,550	463,451	473,056	510,478	545,921	564,183	571,192	434,300	# Registered from AKC Litters during each year
FSS Registrations	8,779	5,338	4,142	4,507	4,012	2,660	3,045	1,685	444	373	247	218	142	# of FSS Dog Registrations each year
Conditional Registrations	3,077	2,579	2,196	2,069	1,987	1,941	2,248	2,269	2,552	2,860	2,821	2,589	2,013	# of Conditional Registrations each year
Open Registrations	1,249	948	1,327	1,308	1,622	1,602	1,528	2,284	1,801	1,579	1,598	1,539	808	# of Open Registrations each year
Foreign Registrations	7,695	7,028	6,768	6,502	7,009	6,732	7,082	7,774	9,054	9,995	11,483	12,114	6,108	# of Foreign-born Registrations each year
Total Dogs Registered	720,230	648,283	560,784	531,757	495,233	478,485	477,354	487,068	524,329	560,728	580,332	587,652	443,371	Total Dog Registrations each year
Unique Bitches Bred (each year)	306,068	278,603	246,968	220,110	202,799	191,161	185,560	185,782	195,250	206,528	215,352	221,793	167,366	Unique # bitches bred each year
Unique Dogs Bred (each year)	201,004	183,943	162,953	144,966	131,281	122,925	118,074	116,395	119,514	124,340	128,945	132,480	105,512	Unique # males bred each year
Total Bred (each year)	507,072	462,546	409,921	365,076	334,080	314,086	303,634	302,177	314,764	330,868	344,297	354,273	272,878	Unique # bred each year
Unique Bitches in Conformation (each year)	77,539	74,505	71,533	70,141	68,330	66,159	64,021	62,326	60,867	59,762	59,282	58,264	30,191	Unique # of bitches in Conformation each year
Unique Dogs in Conformation (each year)	64,672	61,848	59,180	58,235	57,009	54,526	52,485	50,686	48,933	47,673	46,850	46,095	24,862	Unique # of males in Conformation each year
Total Unique in Conformation (each year)	142,211	136,353	130,713	128,376	125,339	120,685	116,506	113,012	109,800	107,435	106,132	104,359	55,053	Unique # in Conformation each year
% Change Conformation		-4.1%	-4.1%	-1.8%	-2.4%	-3.7%	-3.5%	-3.0%	-2.8%	-2.2%	-1.2%	-1.7%	-47.2%	YOY % Change Conformation total dogs
Unique Bitches in Companion (each year)	20,159	19,968	19,803	20,408	20,636	20,351	19,978	19,694	19,556	19,026	18,941	18,833	11,498	Unique # of bitches in Companion each year
Unique Dogs in Companion (each year)	18,402	18,250	18,368	18,773	19,002	18,854	18,743	18,263	18,071	17,466	17,233	17,281	10,600	Unique # of males in Companion each year
Total Unique in Companion (each year)	38,561	38,218	38,171	39,181	39,638	39,205	38,721	37,957	37,627	36,492	36,174	36,114	22,098	Unique # in Companion each year
% Change Companion		-0.9%	-0.1%	2.6%	1.2%	-1.1%	-1.2%	-2.0%	-0.9%	-3.0%	-0.9%	-0.2%	-38.8%	YOY % Change Companion total dogs
Unique Bitches Placing in Performance (each year)	13,187	13,351	12,689	12,627	12,646	13,190	13,577	13,269	14,227	15,814	18,320	20,199	8,386	Unique # of bitches placing in Performance each year
Unique Dogs Placing in Performance (each year)	13,329	13,525	12,883	12,645	12,480	12,844	13,215	13,003	13,561	14,983	17,297	18,594	7,909	Unique # of males placing in Performance each year
Total Unique Placing in Performance (each year)	26,516	26,876	25,572	25,272	25,126	26,034	26,792	26,272	27,788	30,797	35,617	38,793	16,295	Unique # placing in Performance each year
% Change Performance		1.4%	-4.9%	-1.2%	-0.6%	3.6%	2.9%	-1.9%	5.8%	10.8%	15.7%	8.9%	-58.0%	YOY % Change Performance total dogs placing

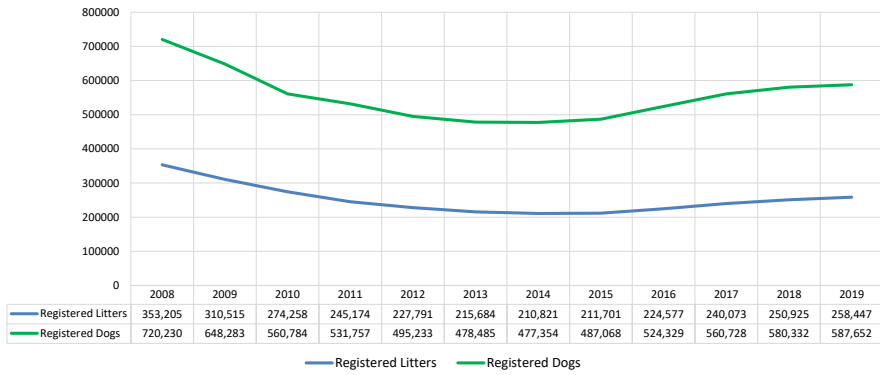
% Change YOY	2008	2009	2010	2011	2012	2013	2014	2015	2016	2017	2018	2019	
Registered Litters	N/A	-12.1%	-11.7%	-10.6%	-7.1%	-5.3%	-2.3%	0.4%	6.1%	6.9%	4.5%	3.0%	These %'s are calculated to show the change each year from the previous year.
Litter Complement	N/A	-11.6%	-10.7%	-9.4%	-5.7%	-4.1%	-1.1%	1.8%	8.6%	8.6%	4.4%	3.9%	
Registered Dogs	N/A	-10.0%	-13.5%	-6.9%	-6.9%	-3.4%	0.0%	2.0%	7.7%	6.9%	3.5%	1.3%	

% Change Relative 2008	2008	2009	2010	2011	2012	2013	2014	2015	2016	2017	2018	2019	
Registered Litters	0.0%	-12.1%	-22.4%	-30.6%	-35.5%	-38.9%	-40.3%	-40.1%	-36.4%	-32.0%	-29.0%	-26.8%	These %'s are calculated to show the change each year compared to 2008.
Litter Complement	0.0%	-11.6%	-21.1%	-28.5%	-32.6%	-35.3%	-36.1%	-34.9%	-29.3%	-23.3%	-19.9%	-16.7%	
Registered Dogs	0.0%	-10.0%	-22.1%	-26.2%	-31.2%	-33.6%	-33.7%	-32.4%	-27.2%	-22.1%	-19.4%	-18.4%	

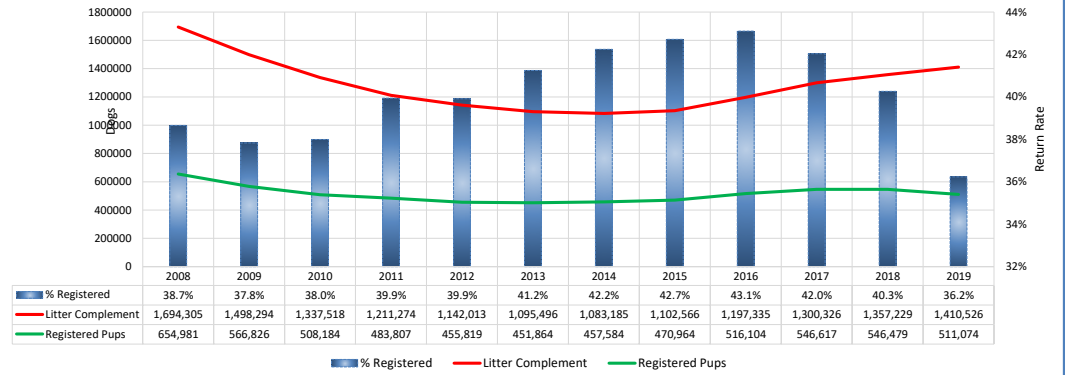
All Breeds (AKC only)

2020 Mid-Year (through July 2020)

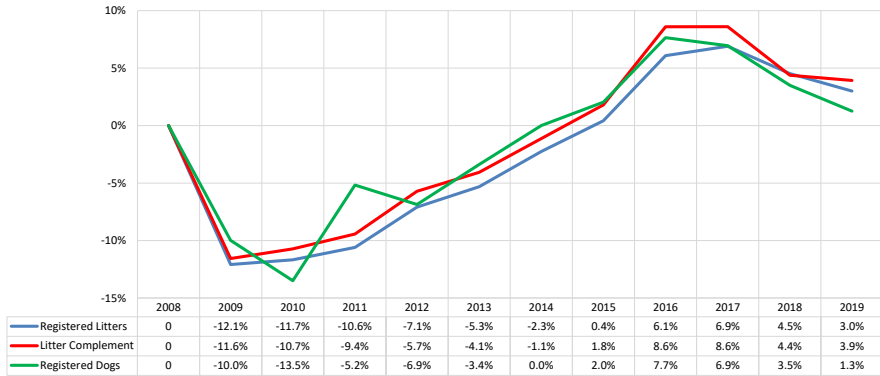
AKC Dog & Litter Registrations



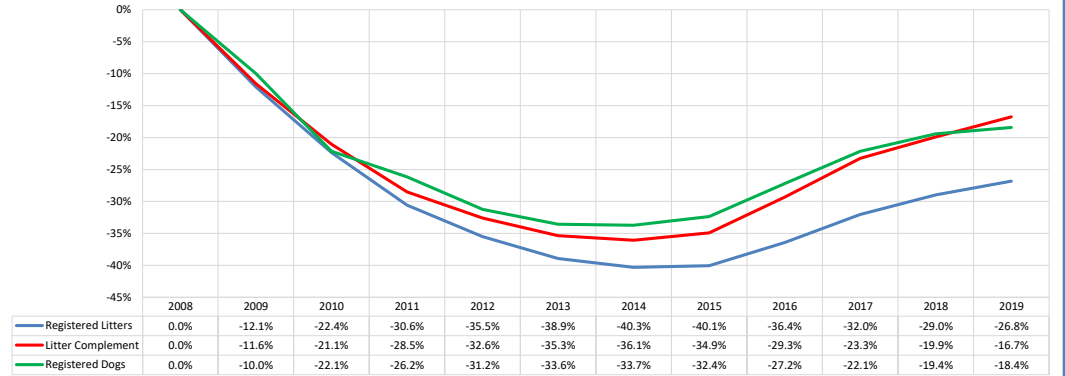
% of Each Year's Litter Complement that were Eventually Registered



% Change from Previous Year (YOY)



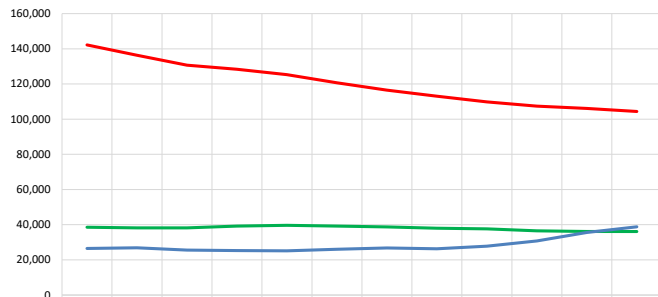
% Change Relative to 2008



All Breeds (AKC only)

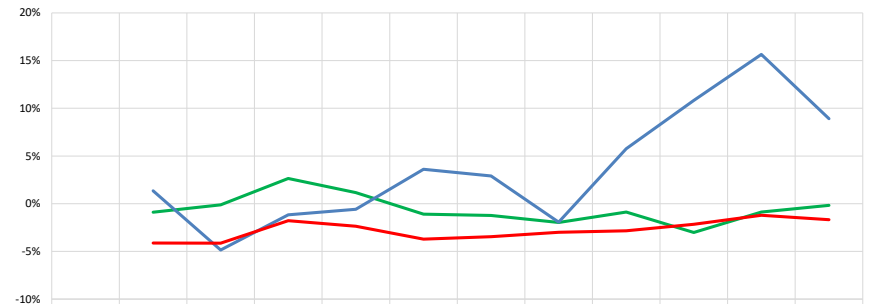
2020 Mid-Year (through July 2020)

Competing: Total Unique Dogs by Sport Each Year



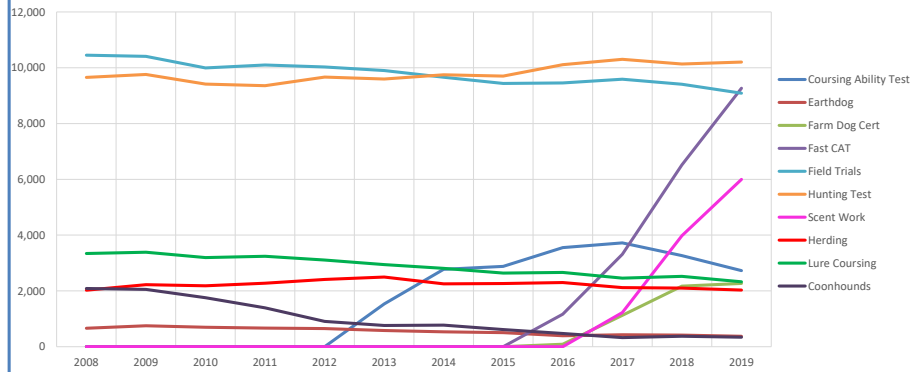
Year	Total Unique in Companion (each year)	Total Unique Placing in Performance (each year)	Total in Conformation (each year)
2008	38,561	26,516	142,211
2009	38,218	26,876	136,353
2010	38,171	25,572	130,713
2011	39,181	25,272	128,376
2012	39,638	25,126	125,339
2013	39,205	26,034	120,685
2014	38,721	26,792	116,506
2015	37,957	26,272	113,012
2016	37,627	27,788	109,800
2017	36,492	30,797	107,435
2018	36,174	35,617	106,132
2019	36,114	38,793	104,359

Competing: % Change Unique Total Dogs Year over Year by Sport

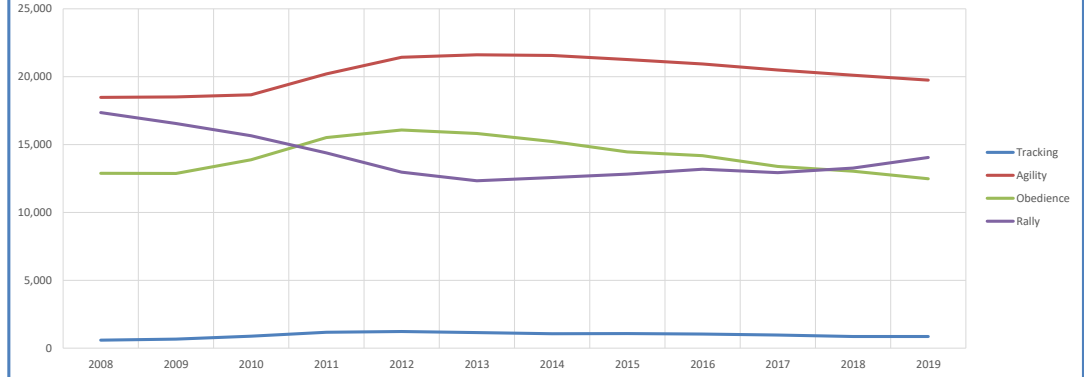


Year	% Change Companion	% Change Performance	% Change Conformation
2008	-	-	-
2009	-0.9%	1.4%	-4.1%
2010	-0.1%	-4.9%	-4.1%
2011	2.6%	-1.2%	-1.8%
2012	1.2%	-0.6%	-2.4%
2013	-1.1%	3.6%	-3.7%
2014	-1.2%	2.9%	-3.5%
2015	-2.0%	-1.9%	-3.0%
2016	-0.9%	5.8%	-2.8%
2017	-3.0%	10.8%	-2.2%
2018	-0.9%	15.7%	-1.2%
2019	-0.2%	8.9%	-1.7%

Performance: Total Unique Dogs Placing



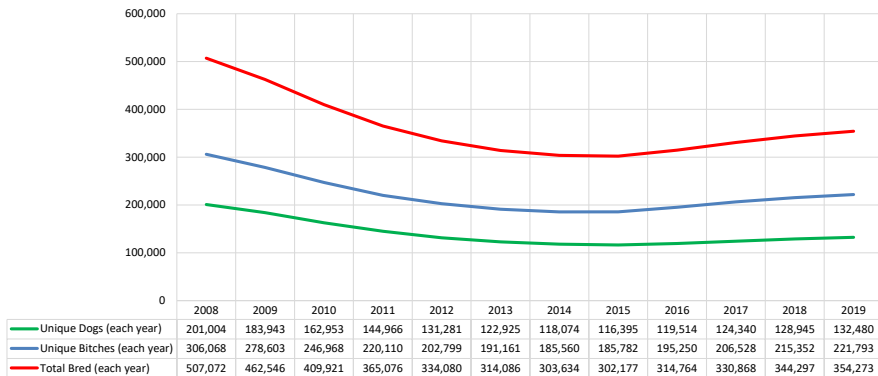
Companion: Total Unique Dogs Entered



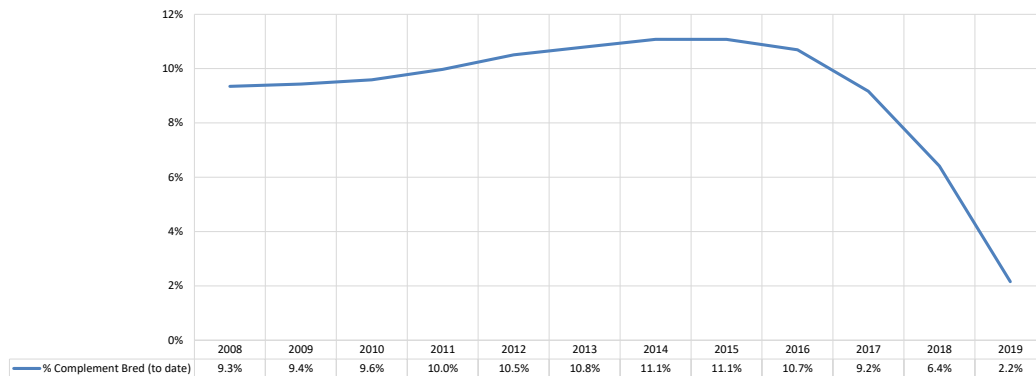
**All Breeds (AKC only)**

**2020 Mid-Year (through July 2020)**

**Breeding: Unique Individual Dogs & Bitches Bred Each Year**



**% of Each Year's Litter Complement that have been Bred (to date)**



**Competing: % of Each Year's Litter Complement in Competition**

